



Stephen Moye

Sales Manager/Senior Loan Officer NMLS:
268619/CA-DBO268619, New American Funding Corporation. NMLS: 6606, Equal Housing Lender
Licensed by the Department of Business Oversight

Under the California Residential Mortgage Lending Act
CA-DBO268619 Corp. NMLS: 67180 Equal Housing Lender
1615 Murray Canyon Road #1050 San Diego, CA 92108

Office: 619-309-1678
Mobile: 619-895-8128
Fax: (619) 793-1026
stephen.moye@nafinc.com
[View My Website](#)

Inventories Driving Price Gains Despite Rates

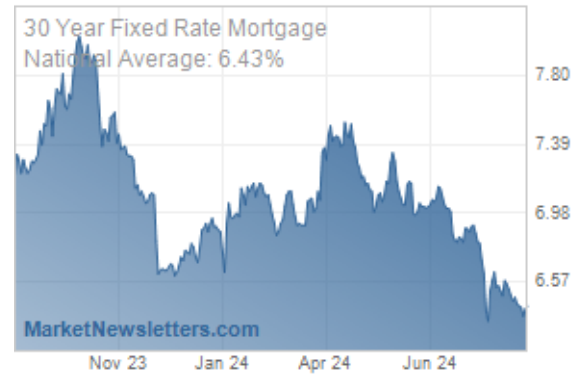
Home prices, as measured by the Federal Housing Finance Agency's (FHFA's) Housing Price Index (HPI), rose **even faster** on an annual basis in December than they had earlier in the fall. The year-over-year gain was 6.2 percent, up from 6.1 percent in the 12 months ended in November, and 6.0 percent in October.

FHFA's HPI report, which this month also included **fourth quarter** data, is based on purchase prices of homes with mortgages backed by or sold to one of the two GSEs Fannie Mae and Freddie Mac.

On a quarterly basis, the HPI was **up 1.5 percent** compared to the third quarter. The monthly change from November to December was 0.4 percent, down from a 0.5 percent gain from October to November.

"Although interest **rates rose sharply** during the fourth quarter, our data show no signs of a home price slowdown," said FHFA Deputy Chief Economist Andrew Leventis. "Although it will certainly take more time for the full effects of the elevated interest rates to be felt, there is no evidence of a normalization in the unusually low inventories of homes available for sale, which has been the primary force behind the extraordinary price gains."

National Average Mortgage Rates



	Rate	Change	Points
Mortgage News Daily			
30 Yr. Fixed	6.43%	+0.02	0.00
15 Yr. Fixed	5.95%	0.00	0.00
30 Yr. FHA	5.82%	+0.02	0.00
30 Yr. Jumbo	6.62%	0.00	0.00
5/1 ARM	6.28%	-0.01	0.00
Freddie Mac			
30 Yr. Fixed	6.35%	-0.51	0.00
15 Yr. Fixed	5.51%	-0.65	0.00
Mortgage Bankers Assoc.			
30 Yr. Fixed	6.44%	-0.06	0.54
15 Yr. Fixed	5.88%	-0.16	0.68
30 Yr. FHA	6.36%	-0.06	0.85
30 Yr. Jumbo	6.75%	+0.07	0.39
5/1 ARM	5.98%	-0.27	0.65

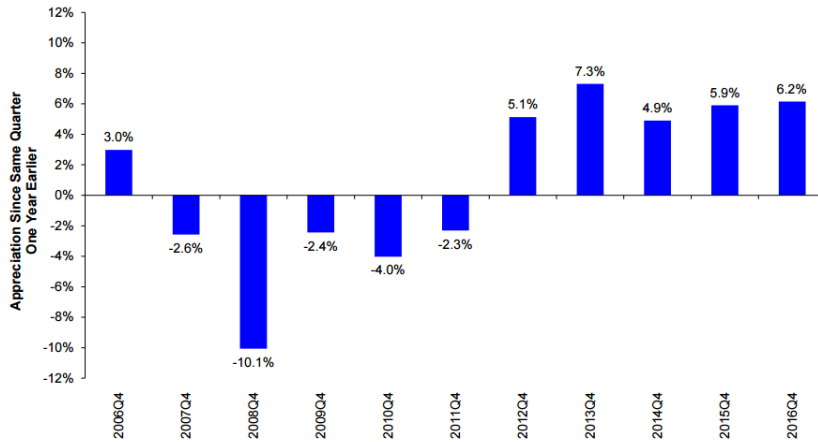
Rates as of: 8/30

Recent Housing Data

		Value	Change
Mortgage Apps	Aug 28	226.9	+0.49%
Building Permits	Mar	1.46M	-3.95%
Housing Starts	Mar	1.32M	-13.15%
New Home Sales	Mar	693K	+4.68%

Housing News Update

House Price Appreciation Over Previous Four Quarters for U.S.
Seasonally Adjusted, Purchase-Only Index

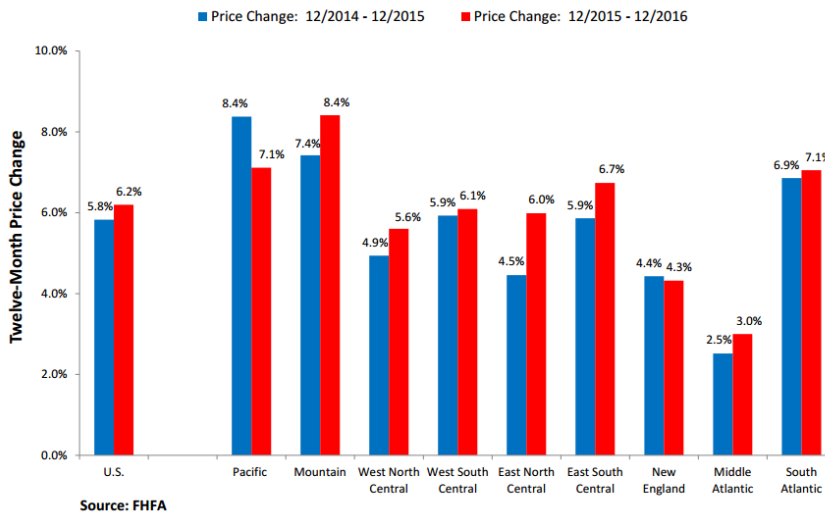


		Value	Change
Pending Home Sales	Feb	75.6	+1.75%
Existing Home Sales	Feb	3.97M	-0.75%
Builder Confidence	Mar	51	+6.25%

Home prices **increased in 46 states** and the District of Columbia from the fourth quarter of 2015 to the same period in 2016. The largest gains were in Oregon at 11.0 percent; Colorado, 10.6 percent; Florida, 10.4 percent; Washington 10.2 percent; and Nevada 8.9 percent.

All nine census divisions had positive price changes over the year with the strongest increase in the Mountain division at 8.0 percent. That region also posted the largest quarterly change at 2.1 percent. The largest monthly change was in the East North Central division, up 0.9 percent from November.

Twelve-Month Price Changes – Prior Year vs. Most Recent Year
Purchase-Only Index



House price appreciation was weakest in the **Middle Atlantic** division, where prices rose 3.0 percent for the 12-month period, 0.9 percent quarter-over-quarter, but posted a 1.1 percent loss from November to December.

thanks for visiting this site

thank you for coming to website. Having been a loan officer for 20+year...I know first hand how important it is to stay on top of the news and event that effect mortgage rates, regulation, and program guidelines. Let this web site be a resource for you.

New American Funding CA-DBO268619 Corp. NMLS: 6606

Equal Housing Lender

Licensed by the Department of Business Oversight Under the California Residential Mortgage Lending Act

Stephen Moyer

