



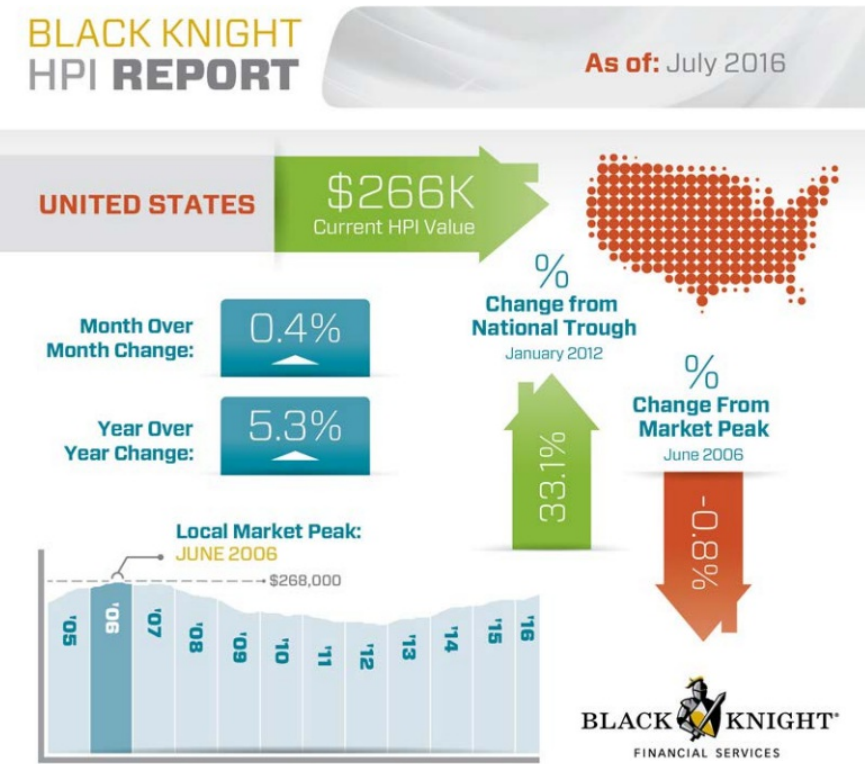
**Kevin Litwicki - NMLS # 289959**  
Sr. Mortgage Advisor, Stampfli Mortgage LLC  
NMLS # 1598803  
303 S. Main Street Verona, WI 53593

Office: 608-572-7522  
Fax: 888-988-0013  
[kevin@stampflimortgage.com](mailto:kevin@stampflimortgage.com)  
[View My Website](#)

## One Price Index Shows Long-Expected Price Slowdown

Black Knight Financial Services released its Home Price Index (HPI) report for July on Monday and, unlike reports from CoreLogic and the Federal Housing Finance Agency (FHFA) reports for the month (the fourth report, the CoreLogic Case-Shiller indices is due out on Tuesday) it shows a **distinct slowing in the pace of price appreciation** over the past few months.

Black Knight reports its national index for July was \$266,000. This is 0.4 percent higher than its index for June and up 5.3 percent compared to August 2015. The month over month increase in May was 1.1 percent, **declining** to 0.8 percent in June. FHFA showed a pickup in the appreciation rate month-over-month and annually in both June and July while CoreLogic showed a 0.3 increase in the annual appreciation rate in July.



## National Average Mortgage Rates



	Rate	Change	Points
<b>Mortgage News Daily</b>			
30 Yr. Fixed	7.51%	+0.08	0.00
15 Yr. Fixed	6.90%	+0.05	0.00
30 Yr. FHA	6.99%	+0.07	0.00
30 Yr. Jumbo	7.67%	+0.04	0.00
5/1 ARM	7.55%	+0.05	0.00

<b>Freddie Mac</b>			
30 Yr. Fixed	7.17%	-0.27	0.00
15 Yr. Fixed	6.44%	-0.32	0.00

<b>Mortgage Bankers Assoc.</b>			
30 Yr. Fixed	7.24%	+0.11	0.66
15 Yr. Fixed	6.75%	+0.11	0.64
30 Yr. FHA	7.01%	+0.11	0.94
30 Yr. Jumbo	7.45%	+0.05	0.56
5/1 ARM	6.64%	+0.12	0.87

Rates as of: 4/30

## Recent Housing Data

		Value	Change
Mortgage Apps	Apr 24	196.7	-2.67%
Building Permits	Mar	1.46M	-3.95%
Housing Starts	Mar	1.32M	-13.15%
New Home Sales	Mar	693K	+4.68%
Pending Home Sales	Feb	75.6	+1.75%
Existing Home Sales	Feb	3.97M	-0.75%

The national HPI is now **less than 1 percent** off of the peak of \$268,000 reached in June 2006. Prices have increased by 33.1 percent since they tumbled to a low of \$200,000 in January 2012.

Among the states, prices increased the most from June to July in **New York** at 1.1 percent and **Minnesota** at 1.0 percent. The HPI for Utah grew by 0.9 percent while Rhode Island, Wisconsin, and Idaho all posted 0.8 percent gains.

Black Knight's HPI **declined** in only one state, Missouri, which was down 0.1 percent. Nebraska, Virginia, North Carolina, and Maine rounded out the bottom five states for appreciation, each rising 0.1 percent.

Black Knight's index covers nearly 90 percent of U.S. residential properties at ZIP Code level and uses repeat sales data from its public records data set and its loan-level performance data to capture home price information.

## All Your Mortgage Needs, Professionally Delivered with a Personal Touch

Whether you're a first-time homebuyer hoping to navigate the process of buying a home so that it is a fun and anxiety-free process or a homeowner looking for refinance options that deliver more freedom and flexibility, I can help you analyze your current situation and find money saving options. With expertise in all areas of mortgage and financing, my hope is that once I become your mortgage partner, I'll stay your mortgage partner. With clients from A to Z, files never leave my hands or my desk. From start to finish, every step of the way, my goal is to keep the lines of communication open, provide complete and attentive service, and ensure the most seamless and satisfactory process possible.

Kevin Litwicki - NMLS # 289959

