



**Kevin Litwicki - NMLS # 289959**

Sr. Mortgage Advisor, Stampfli Mortgage LLC

NMLS # 1598803

303 S. Main Street Verona, WI 53593

Office: 608-572-7522

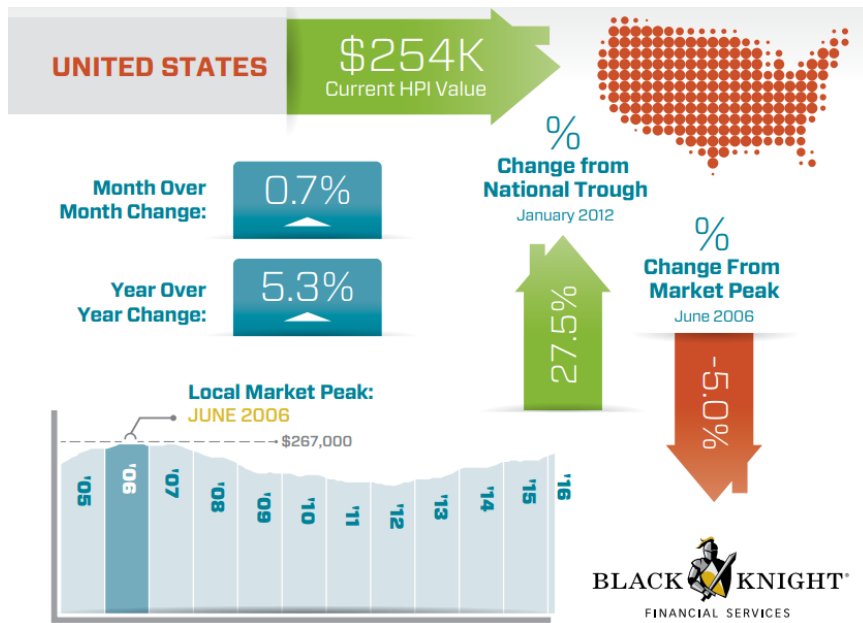
Fax: 888-988-0013

[kevin@stampflimortgage.com](mailto:kevin@stampflimortgage.com)

[View My Website](#)

## Home Prices Closing on 2006 Peak

Home prices rose 0.7 percent from January to February according to Black Knight Financial Services. The company's Home Price Index (HPI) was at \$245,000 a 5.3 percent increase from February 2015.



The company said that there is still **strong upward monthly price movement** in several states and metro areas. Washington led with 1.8 percent appreciation over January followed by Colorado at 1.7 percent. The remainder of the top five were Oregon, California with monthly gains of 1.3 percent and Hawaii at 1.2 percent. The strongest metro areas were San Jose with a 2.4 percent increase, and Seattle, up 2.1 percent.

**Three states** saw prices fall during the month, Connecticut, down 0.4 percent and Rhode Island, and New Jersey each falling 0.2 percent. The three together also accounted for seven of the 10 worst performing metro areas.

Black Knight says the U.S. HPI is **now up 27.5 percent from the 2012** price bottom but is still down 5 percent from the peak of \$267,000 it reached in 2006. Of the 20 largest states tracked by the company New York, Tennessee, and Texas all hit new peaks as did 10 of the largest 40 metro areas; Austin, Dallas, Denver, Houston, Kansas City (MO), Nashville, Portland (OR), San

## National Average Mortgage Rates



	Rate	Change	Points
<b>Mortgage News Daily</b>			
30 Yr. Fixed	7.41%	-0.09	0.00
15 Yr. Fixed	6.83%	-0.06	0.00
30 Yr. FHA	6.87%	-0.08	0.00
30 Yr. Jumbo	7.60%	-0.04	0.00
5/1 ARM	7.37%	-0.03	0.00

### Freddie Mac

30 Yr. Fixed	6.88%	-0.56	0.00
15 Yr. Fixed	6.16%	-0.60	0.00

### Mortgage Bankers Assoc.

30 Yr. Fixed	7.01%	+0.10	0.59
15 Yr. Fixed	6.46%	+0.11	0.60
30 Yr. FHA	6.80%	+0.06	0.93
30 Yr. Jumbo	7.13%	+0.07	0.56
5/1 ARM	6.41%	+0.04	0.67

Rates as of: 4/17

## Recent Housing Data

		Value	Change
Mortgage Apps	Apr 10	195.7	+0.05%
Building Permits	Mar	1.46M	-3.95%
Housing Starts	Mar	1.32M	-13.15%
New Home Sales	Feb	662K	+0.15%
Pending Home Sales	Feb	75.6	+1.75%
Existing Home Sales	Feb	3.97M	-0.75%

	Value	Change
Builder Confidence	Mar	51 +6.25%

# All Your Mortgage Needs, Professionally Delivered with a Personal Touch

Whether you're a first-time homebuyer hoping to navigate the process of buying a home so that it is a fun and anxiety-free process or a homeowner looking for refinance options that deliver more freedom and flexibility, I can help you analyze your current situation and find money saving options. With expertise in all areas of mortgage and financing, my hope is that once I become your mortgage partner, I'll stay your mortgage partner. With clients from A to Z, files never leave my hands or my desk. From start to finish, every step of the way, my goal is to keep the lines of communication open, provide complete and attentive service, and ensure the most seamless and satisfactory process possible.

Kevin Litwicki - NMLS # 289959

